



Community-Engaged Grantmaking

October 20, 2016

MeHAF
MAINE HEALTH ACCESS
FOUNDATION

the **Sillerman Center**
FOR THE ADVANCEMENT OF PHILANTHROPY

 **ENDOWMENT**
for Health

Maine 
Community Foundation

Elmina B. Sewall
FOUNDATION



GRANTMAKERS CONCERNED WITH IMMIGRANTS AND REFUGEES

Question

**Who and what made you feel
welcomed the last time you
moved?**

(to a new country, college,
neighborhood, state, or town)

A larger project in philanthropy:

Immigrant Integration in Northern New England



**Strategies for a Changing
Northern New England**

June 2016

Concord NH

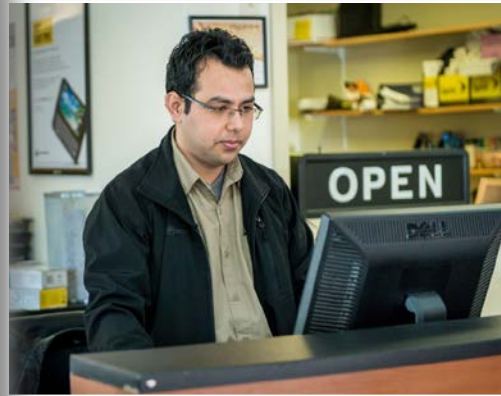


**Community-Engaged
Grantmaking**

October 2016

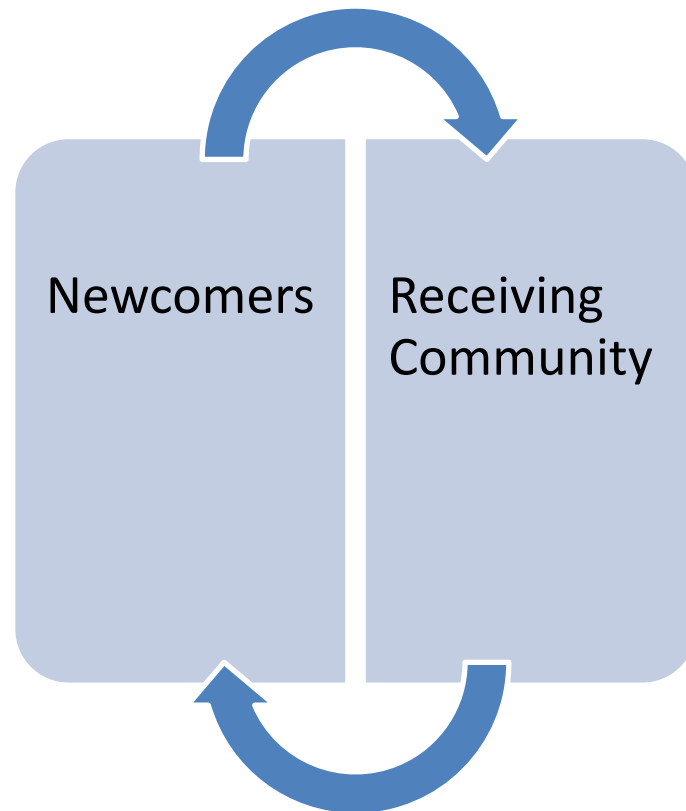
Portland ME

In our communities



Immigrant Integration

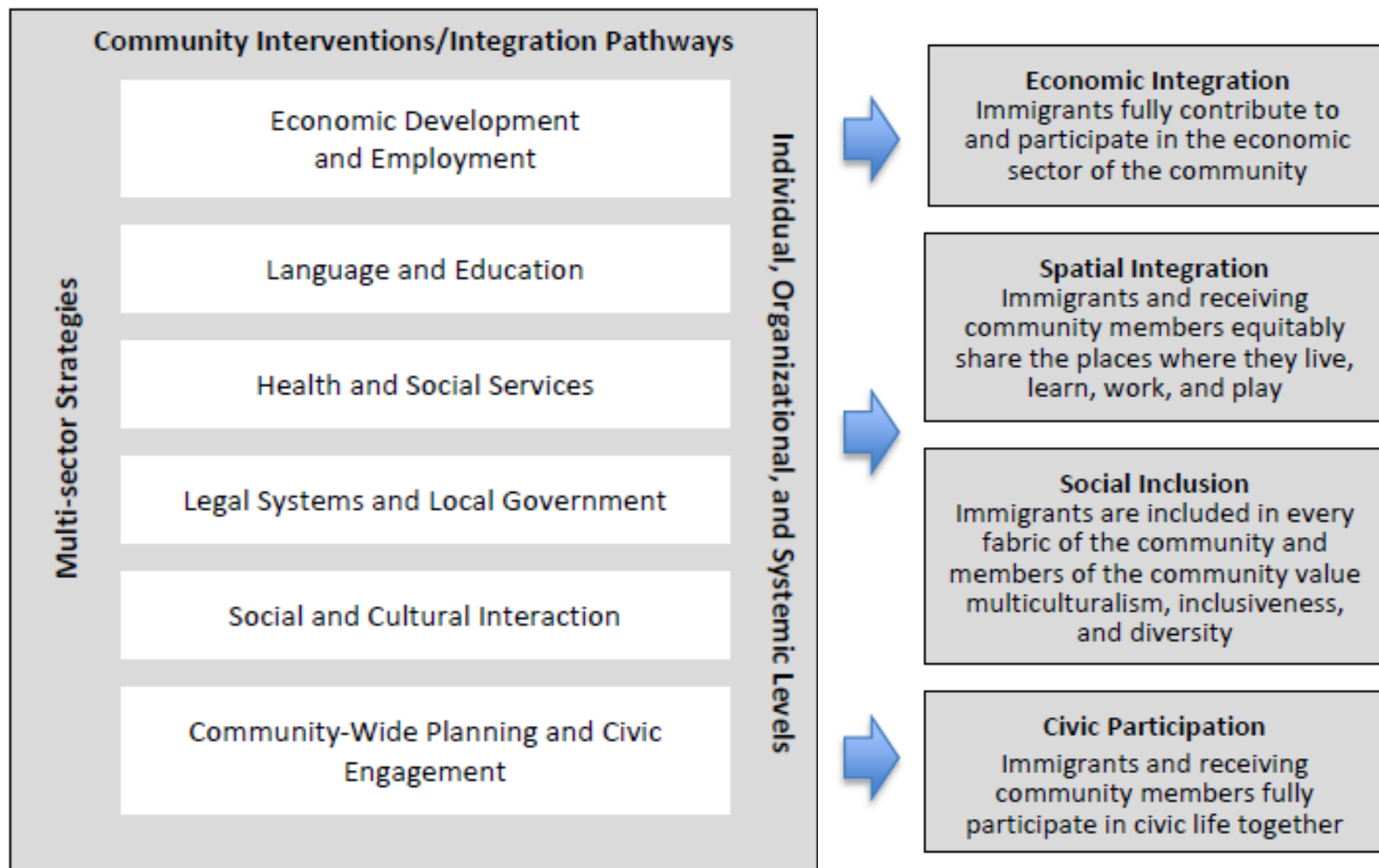
A dynamic, two-way process in which newcomers and the receiving society work together to build secure, vibrant, and cohesive communities.



Integration Pathways



Integration Outcomes



Integration Principles



Equity | Power sharing | Collaboration | Multiple forms of Knowledge | Change | Relationships

Community-Engaged Grantmaking



What grantseeking can feel like



What grantmaking can feel like



Our vision



Your table



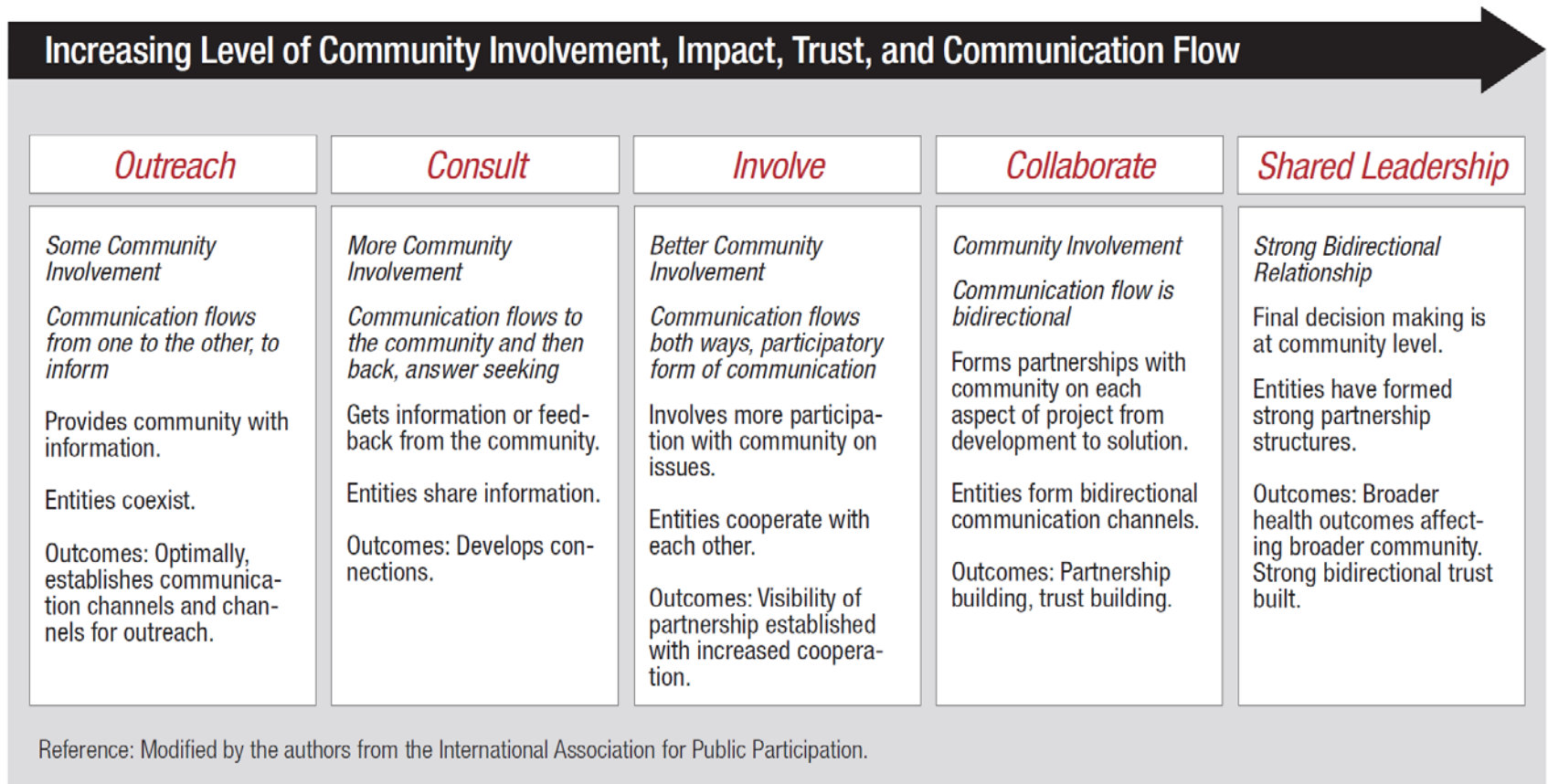
Your table



**Who has a seat?
Who set the table?**



Community Engagement Continuum



We're on the right track



Ekhlas Ahmed

BOBBIE GOTTSCHALK / SEEDS OF PEACE

*"Portland English
Teacher Makes
Muslim Students
Feel Super
Comfortable"*

By ABUKAR ADAN
AUG 15, 2016



Today's Agenda: Putting Immigrant Integration Into Practice

