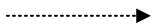
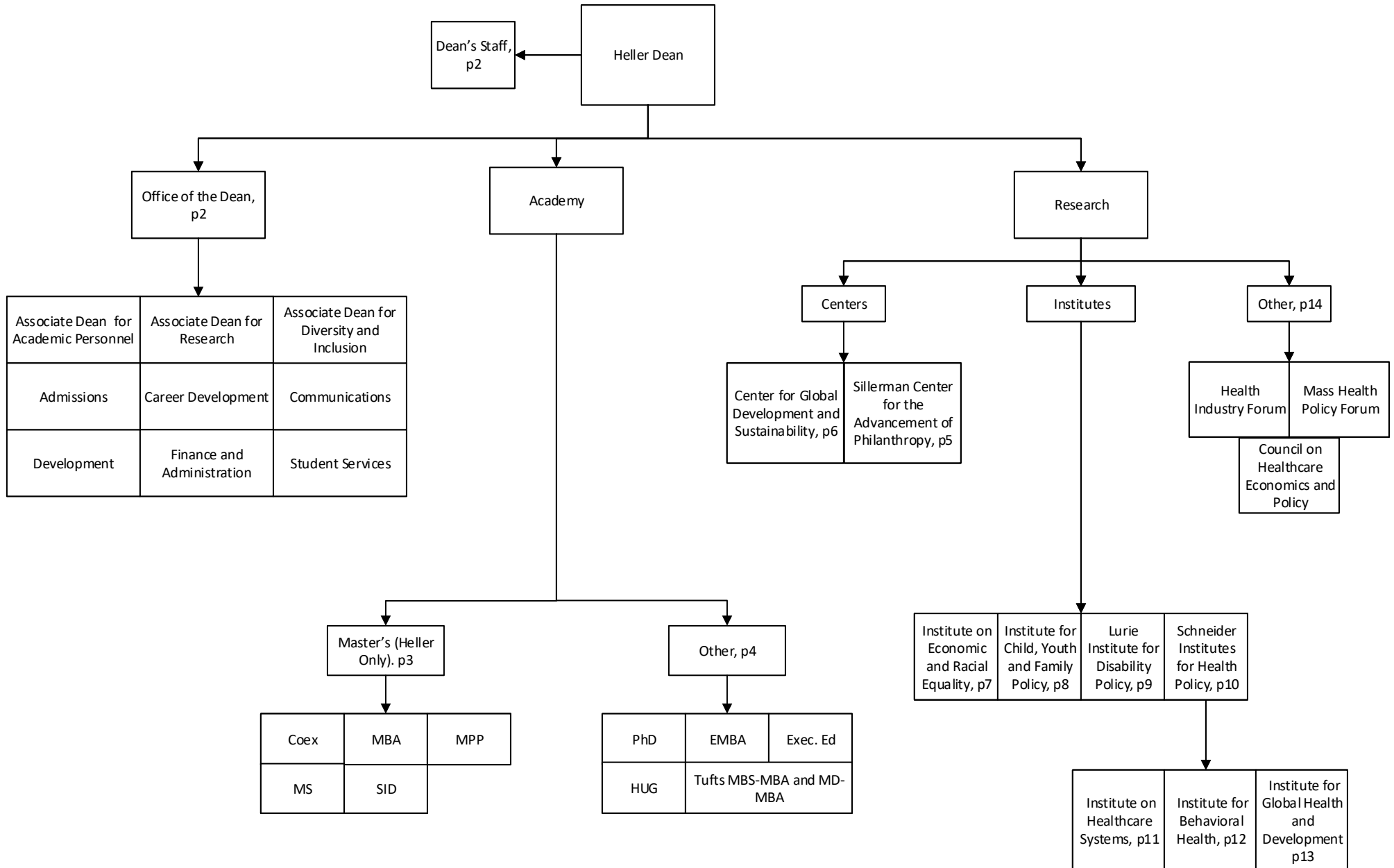
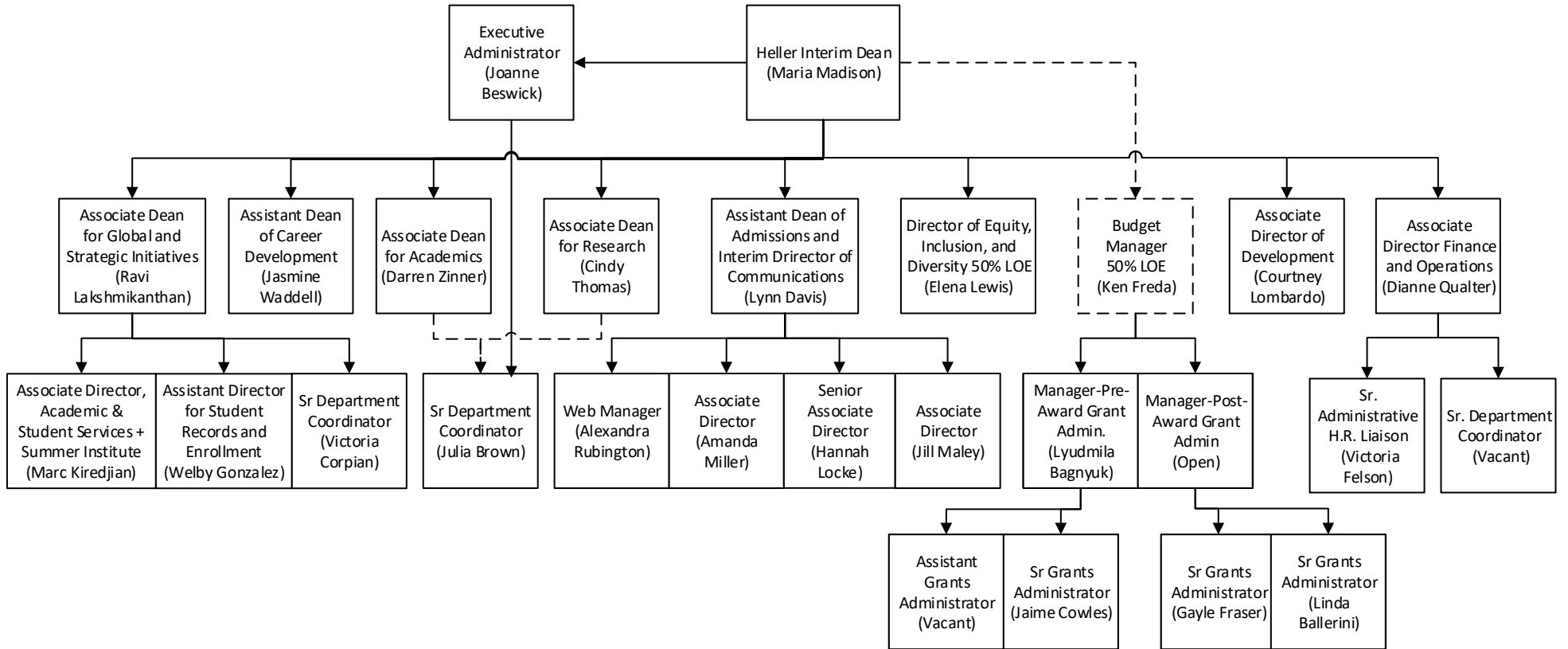


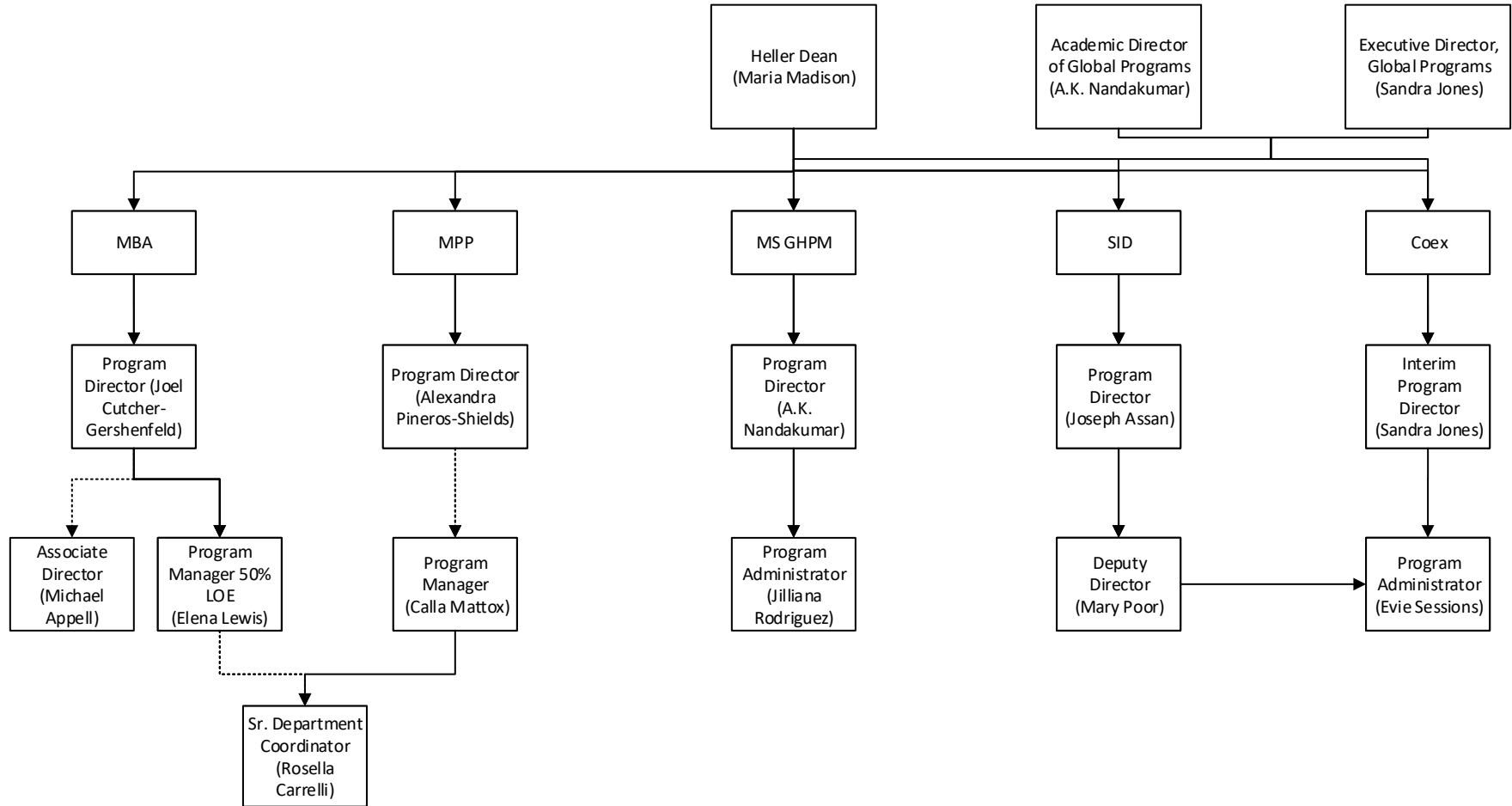
## Overview 9/14/23



Dashed Indicates that this is not an official reporting line.



## Academy- Masters (Heller Only)



MBA Core Faculty\*  
Brenda Anderson  
Lawrence Bailis  
Carole Carlson  
Susan Curnan  
Joel Cutcher-Gershenfeld  
Stephen Fournier  
Jody Hoffer Gittell  
Sakshi Jain  
David Weil

MPP Core Faculty\*  
Christine Bishop  
Mary Brolin  
Susan Curnan  
Michael Doonan  
Stephen Fournier  
Sakshi Jain  
Robert Kuttner  
Lisa Lynch  
Alexandra Pineros-Shields  
Sangeeta Tyagi  
Marji Warfield

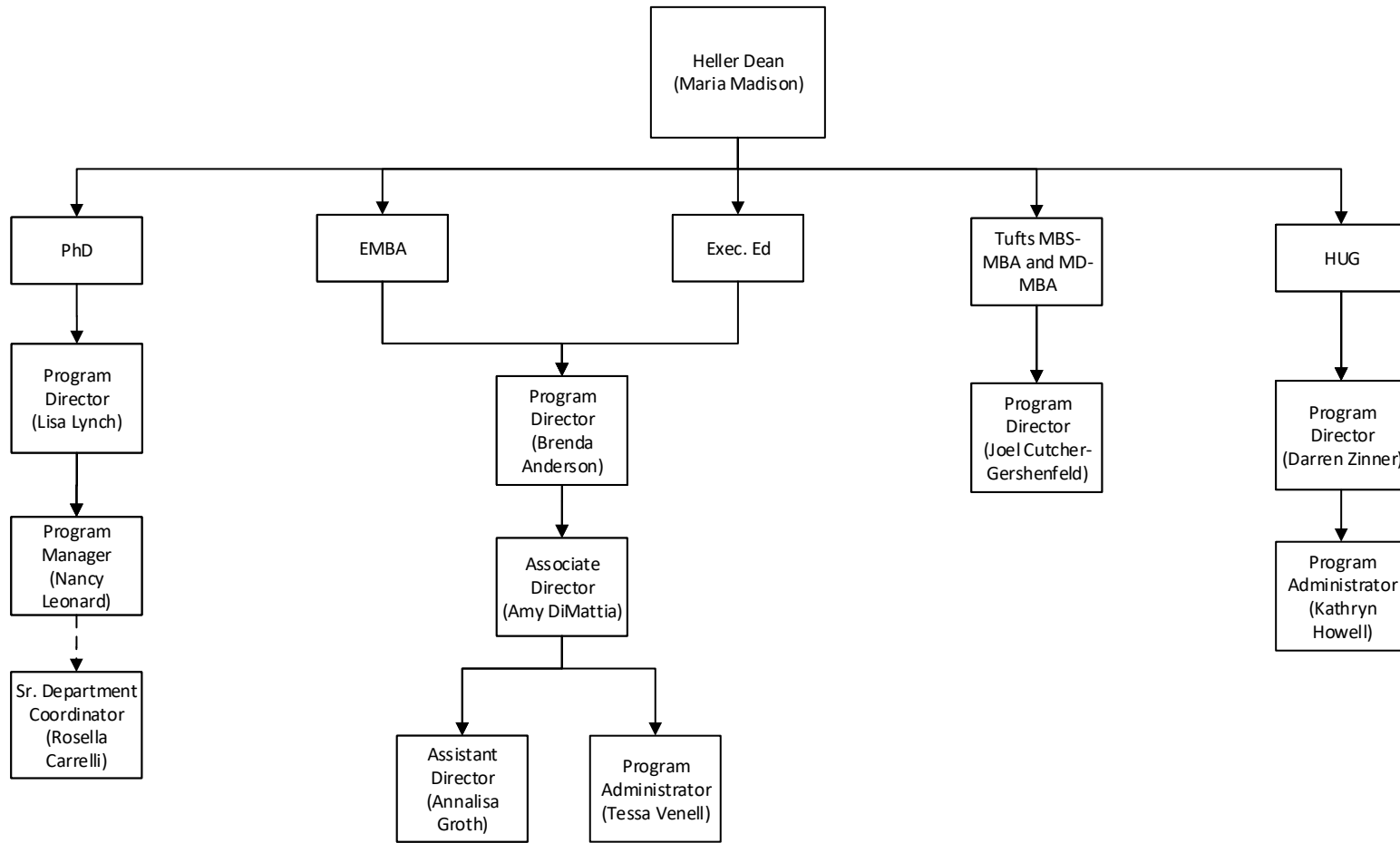
MS Core Faculty\*  
Stephen Fournier  
A.K. Nandakumar  
Moaven Razavi  
Donald Shepard

SID Core Faculty\*  
Joseph Assan  
Ricardo Godoy  
Rajesh Sampath  
Larry Simon

COEX Core Faculty\*  
Pamina Firchow  
Alain Lempereur

\*Core Faculty do not include external faculty, such as adjuncts, those who teach but are on a research track, such as scientists with lecturer titles, or staff who teach.

## Academy- Other



### PhD Core Faculty\*

Dolores Acevedo-Garcia  
Stuart Altman  
Christine Bishop  
Michael Doonan  
Stephen Fournier  
Deborah Garnick  
Jody Hoffer Gittell  
Anita Hill  
Dominic Hodgkin  
Constance Horgan

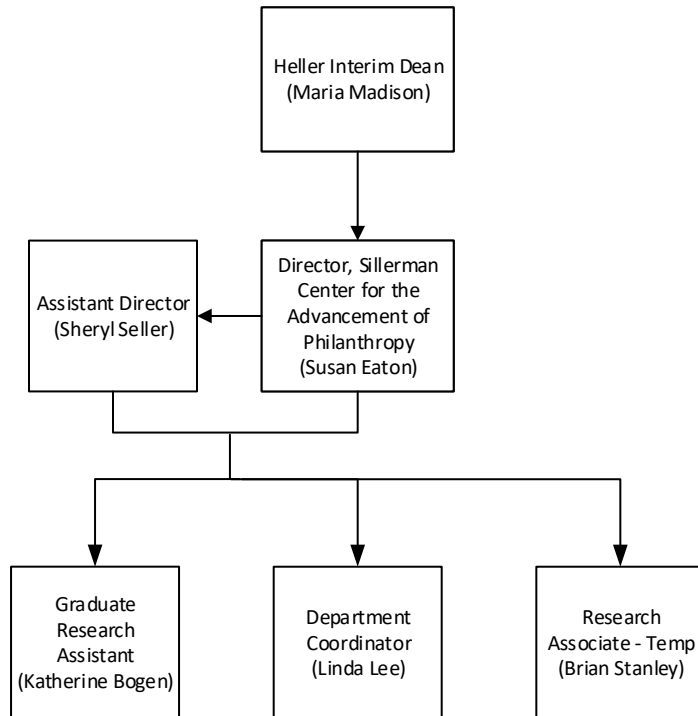
Nina Kammerer  
Robert Kuttner  
Lisa Lynch  
Monika Mitra  
Allyala Krishna Nandakumar  
Alexandra Pineros-Shields  
Rajesh Sampath  
Len Saxe  
Laurence Simon

### HUG Core Faculty\*

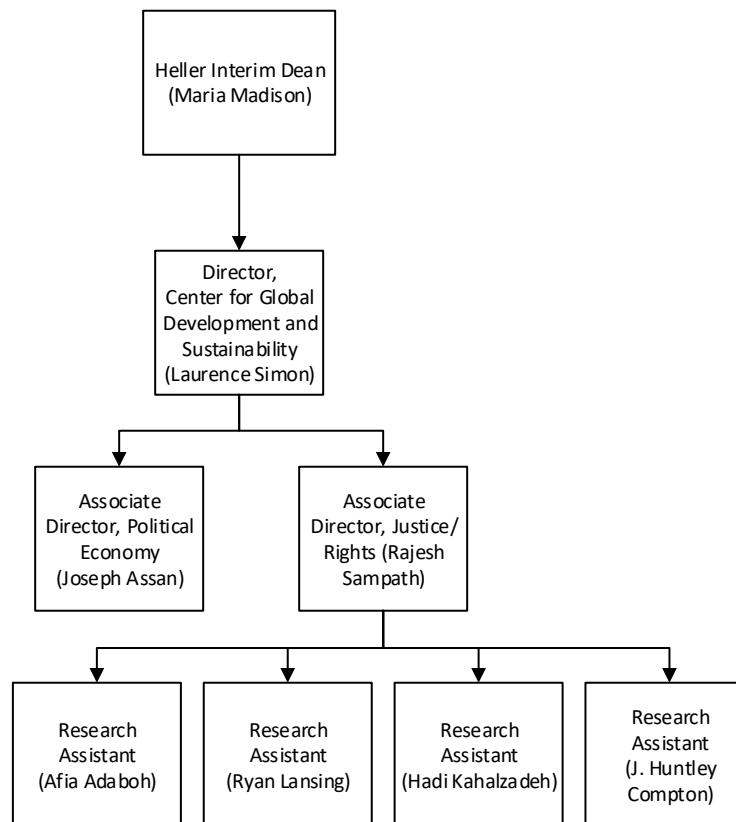
Karen Donelan  
Deborah Garnick  
Dominic Hodgkin  
Monika Mitra  
Sharon Reif  
Rajesh Sampath  
Laurence Simon  
Cindy Thomas  
Darren Zinner

\*Core Faculty do not include external faculty, such as adjuncts, those who teach but are on a research track, such as scientists with lecturer titles, or staff who teach.

## Sillerman Center for the Advancement of Philanthropy



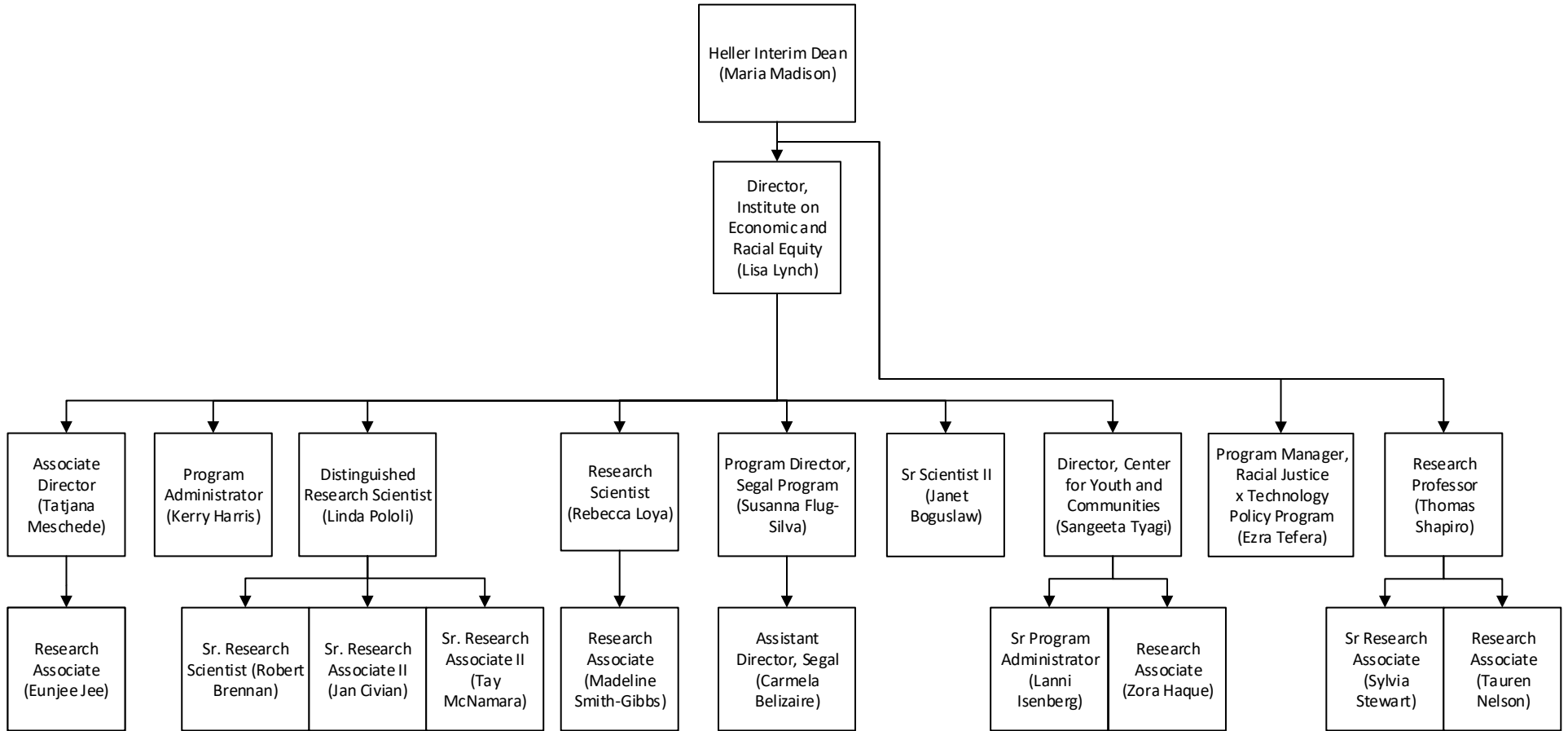
## Center for Global Development and Sustainability



### Brandeis Faculty Associated with this Center

Vinya Ariyaratne  
Joseph Assan  
Mei-Ling Ellerman  
Cristina Espinosa  
Stephen Fournier  
Ricardo Godoy  
Nader Habibi  
Susan Holcombe  
Marion Howard  
Prakash Kashwan  
Ravi Lakshmiathan  
Alain Lempereur  
Dan Perlman  
Donald Shepard  
Sabine Von Mering

## Institute on Economic and Racial Equity



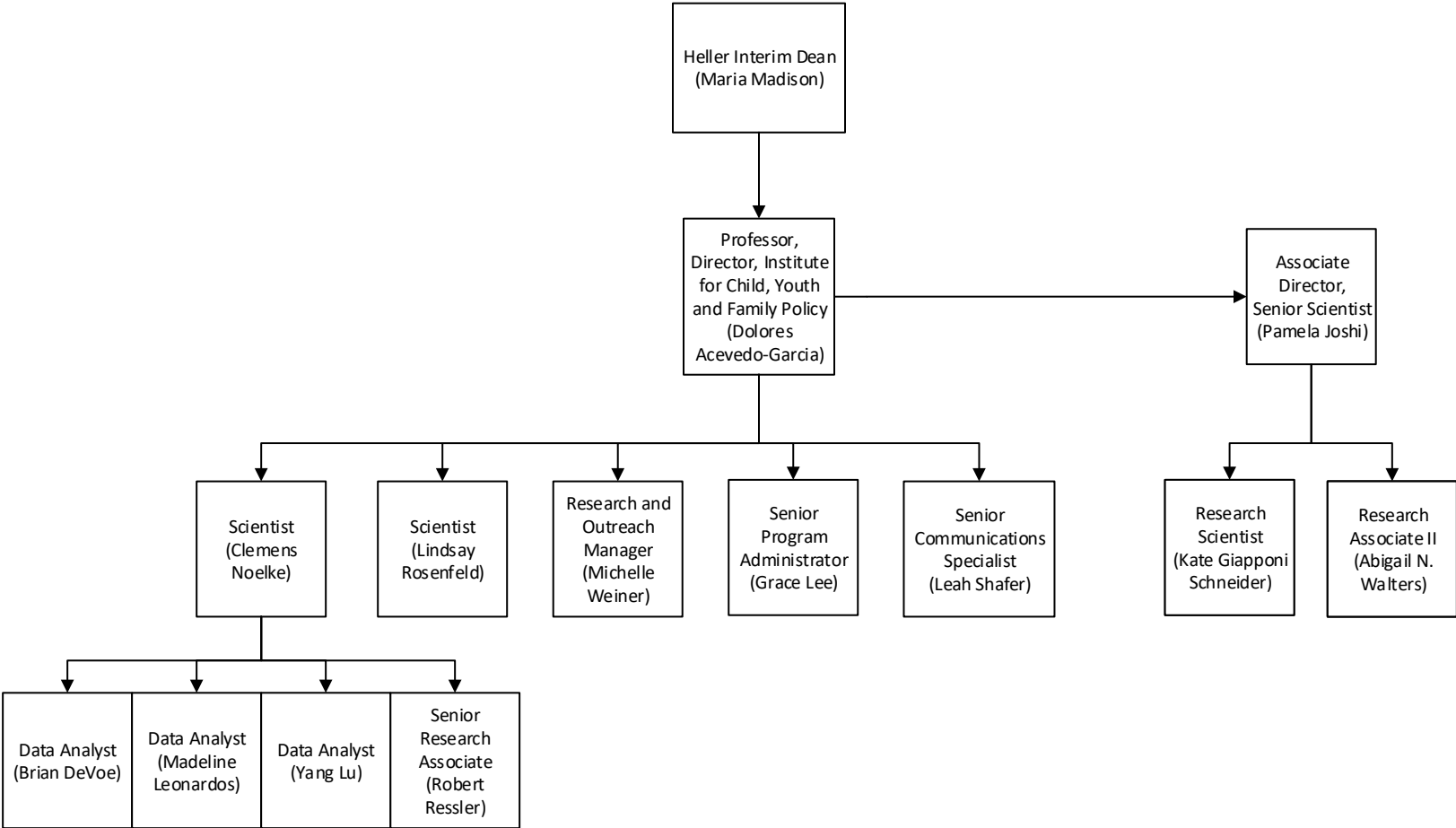
### Heller Faculty Associated with this Institute

Susan Curnan  
Sakshi Jain – IERE Scholar in Residence  
Alexandra Pineros-Shields  
Thomas Shapiro  
Marji Warfield  
David Weil

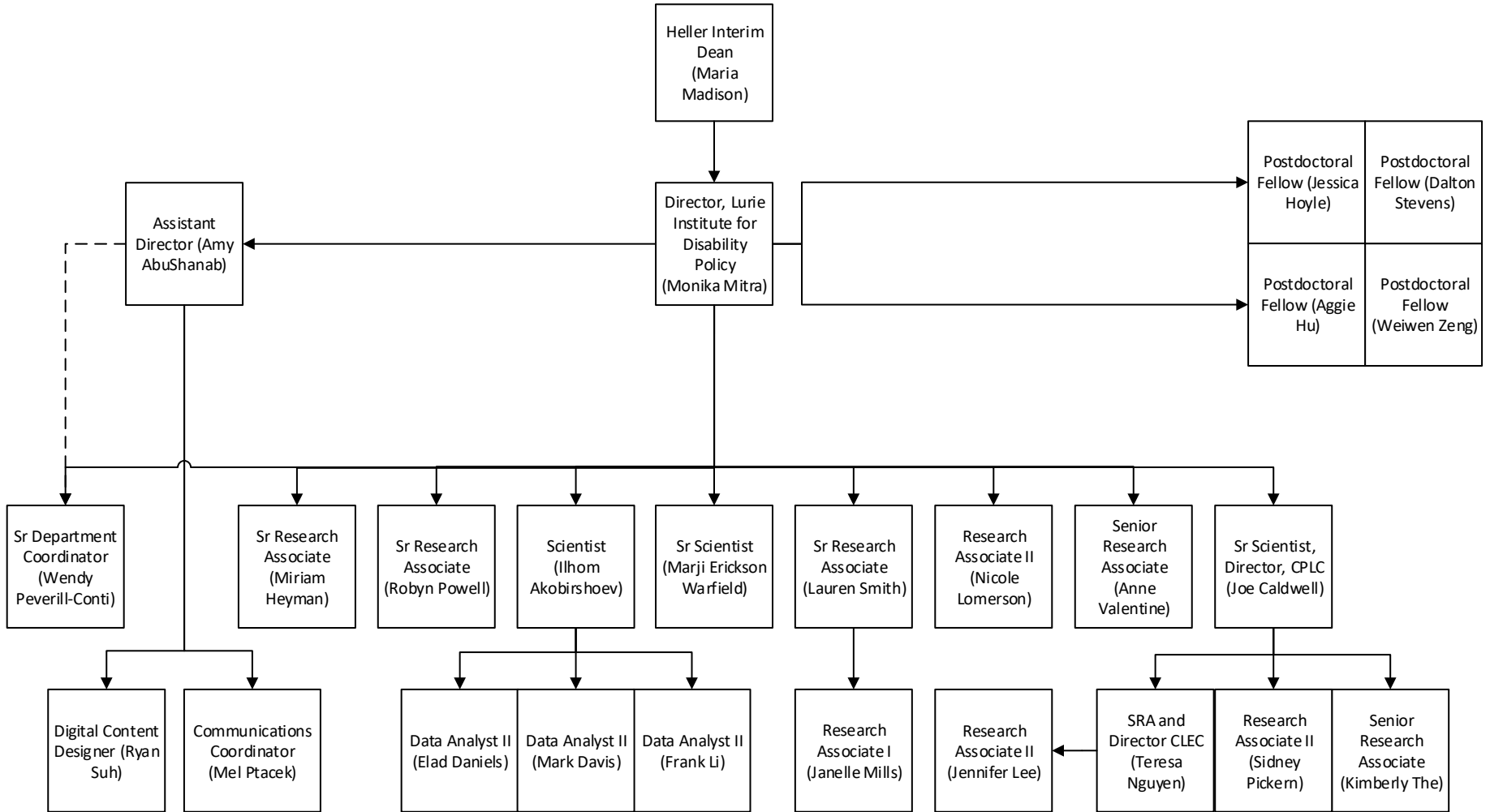
### Other People

Matthew Hoover, Senior Research Assoc. (Marji Warfield supervisor)

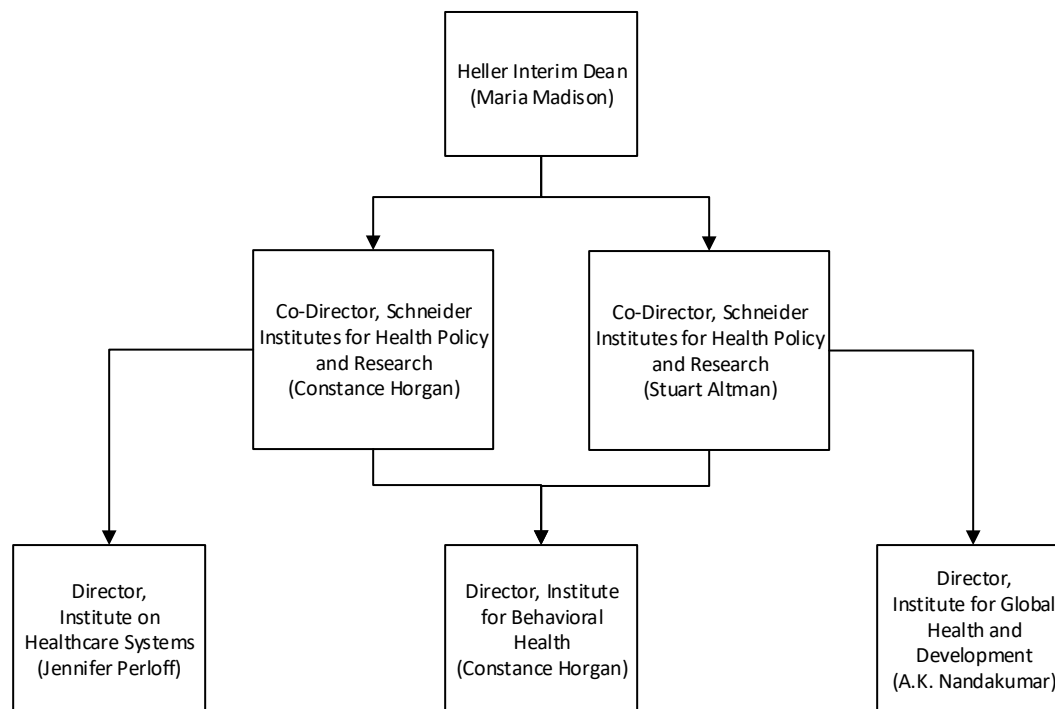
Institute for Child, Youth  
and Family Policy





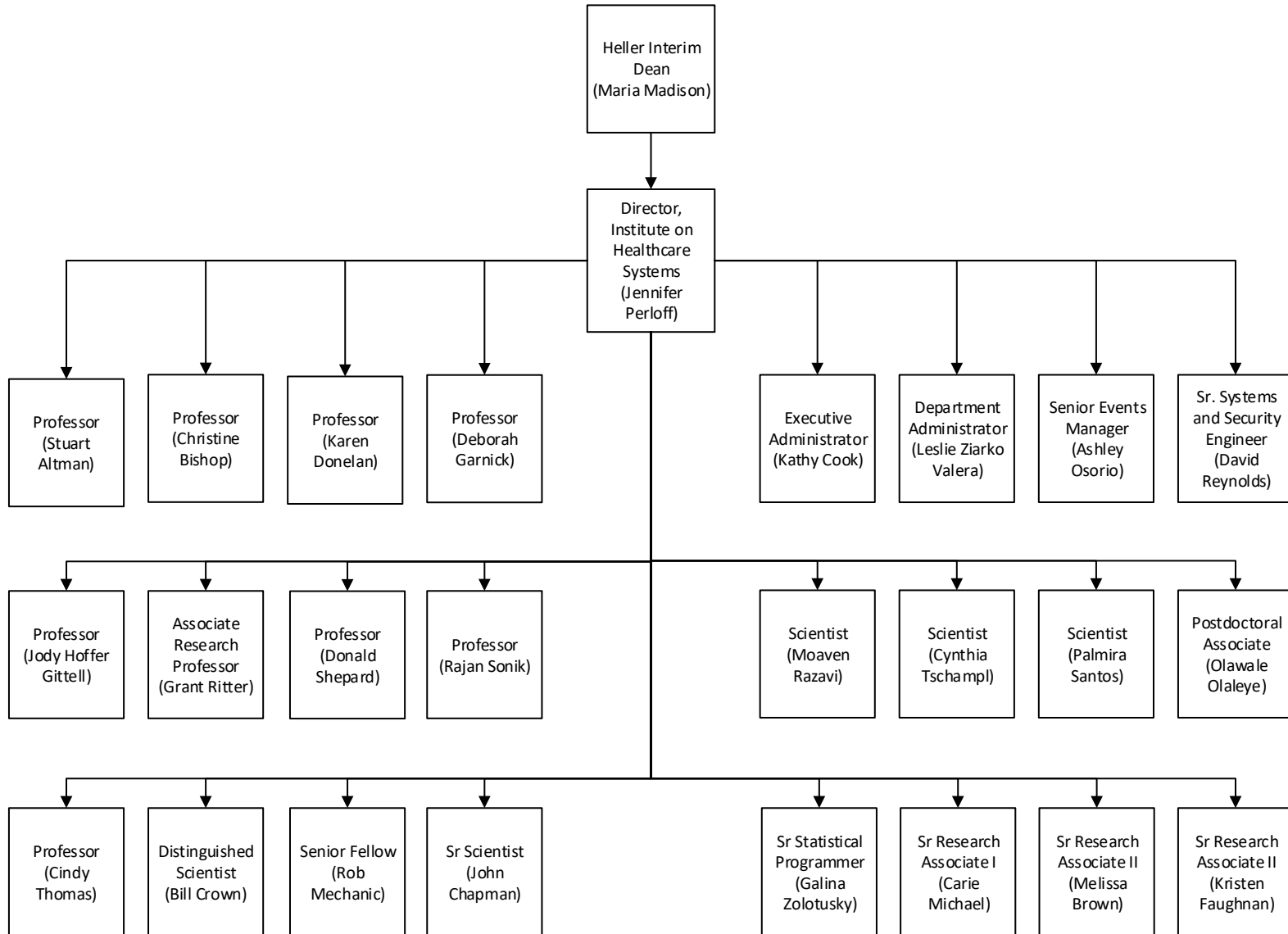


## Schneider Institutes for Health Policy and Research



See next few pages for further breakouts of the institutes.

## Schneider Institute on Healthcare Systems

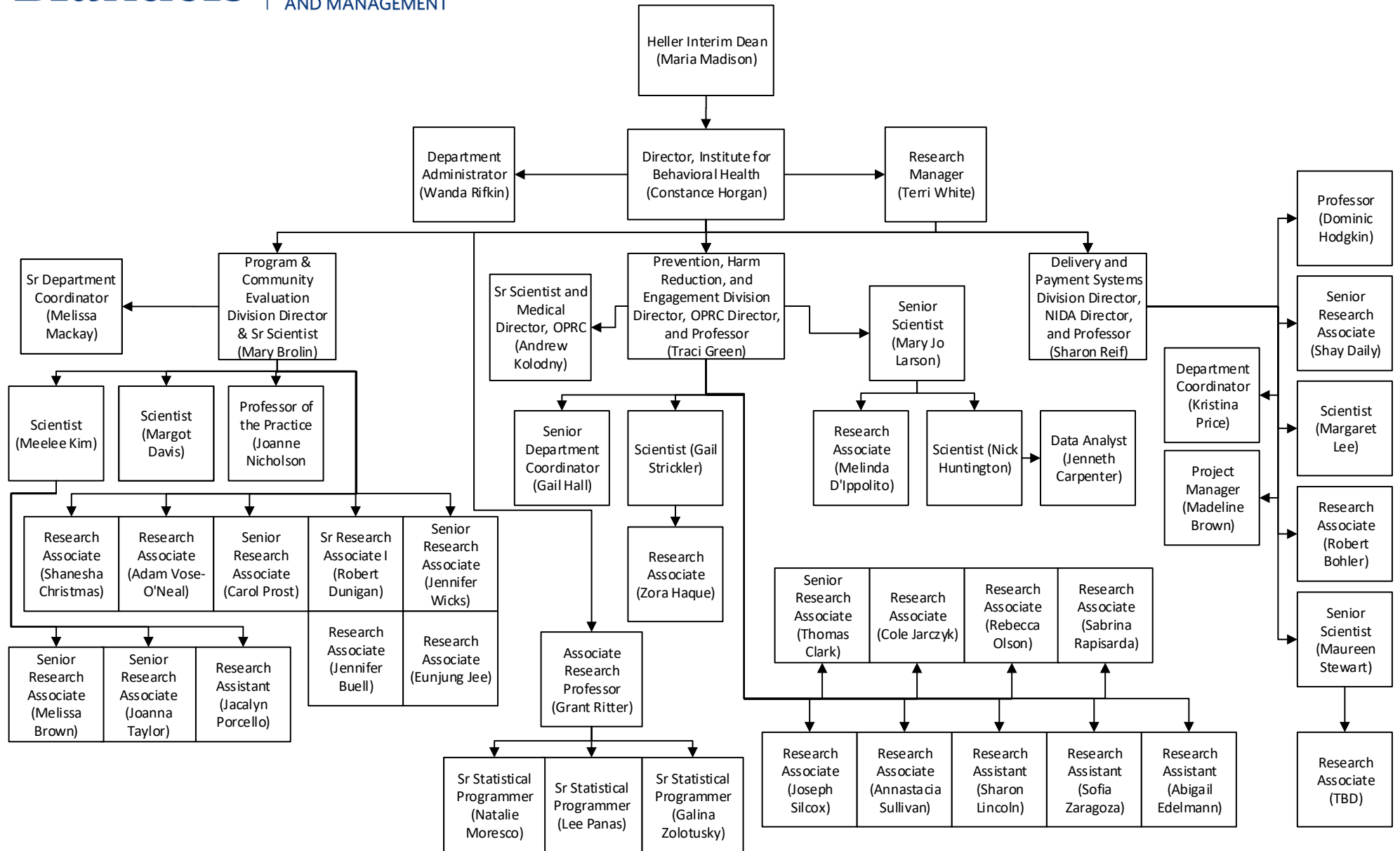


Heller Faculty Associated with this Institute

Stuart Altman  
Christine Bishop  
Karen Donelan  
Michael Doonan

Deborah Garnick  
Jody Hoffer Gittell  
Jeffrey Prottas  
Donald Shepard  
Cindy Thomas

## Schneider Institute for Behavioral Health



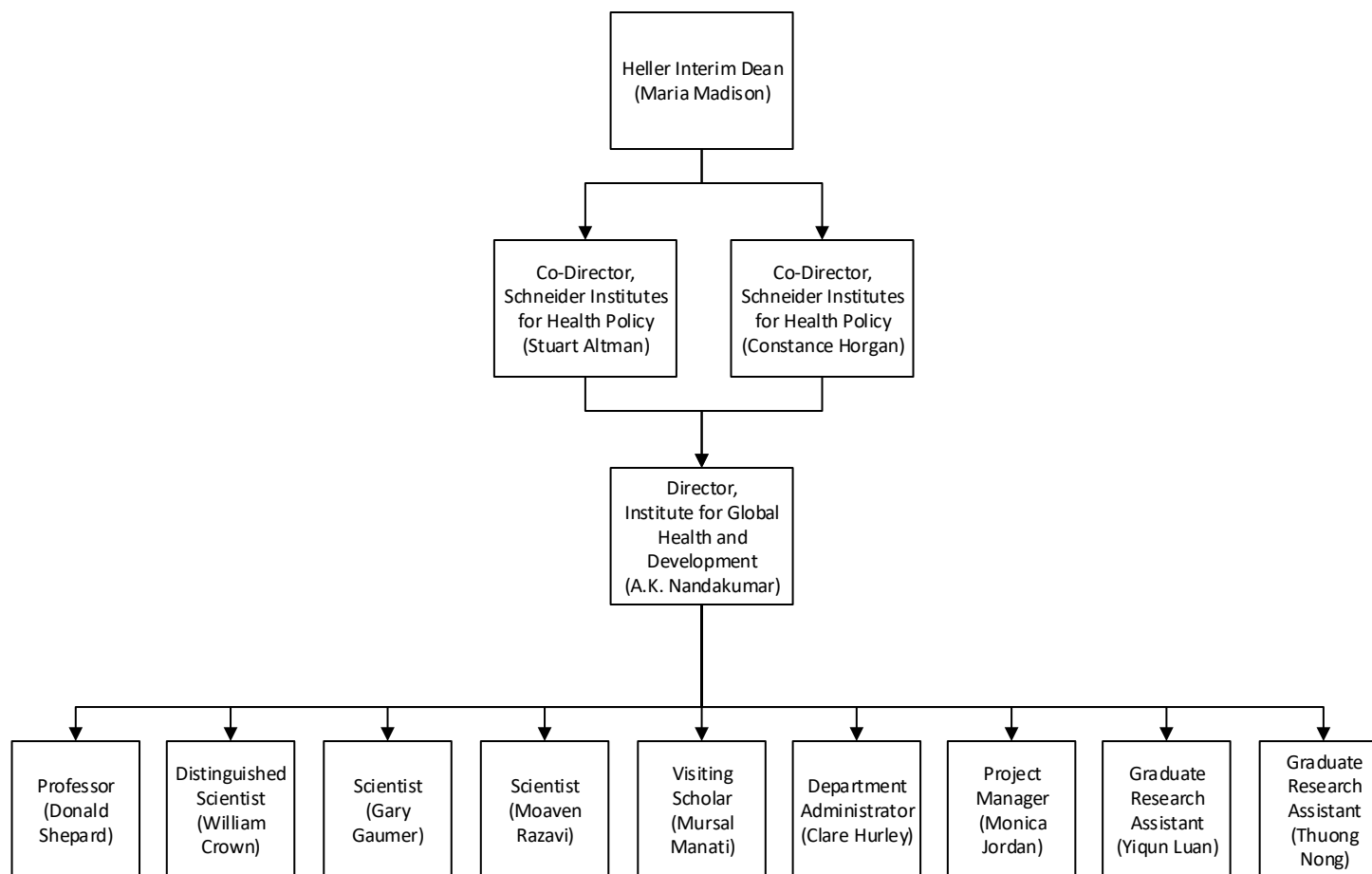
Heller Faculty  
Associated with this  
Institute

Stuart Altman  
Deborah Garnick  
Dominic Hodgkin  
Grant Ritter

Other SIHPR Researchers Affiliated with IBH

William Crown  
Karen Donelan  
Michael Doonan  
Cindy Thomas  
Christopher Tompkins  
Cynthia Tschamp

## Schneider Institute for Global Health and Development



Heller Faculty Associated with this Institute

Donald Shepard  
Cindy Thomas

## Other Research + Community Engagement

