

# NIDILRR Promotes Community Living



*NIDILRR: National Institute on Disability, Independent Living, and Rehabilitation Research*



A majority of eligible individuals desire to receive Medicaid-funded Long-Term Services and Supports (LTSS) in their home and community.



Some forms of LTSS are optional even though they cost less than mandatory institutional coverage.

The NIDILRR-funded Community Living Policy Center (CLPC) conducts research and policy development to inform legislative policy on ways to **increase community-based LTSS that are cost effective.** Our work has fostered:



Decreased federal spending on institutional LTSS



Increased state utilization of the Money Follows the Person (MFP) Program



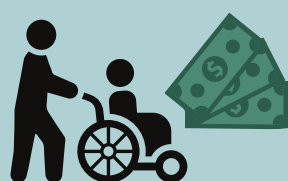
Enhanced employment opportunities for people with disabilities and older adults



State innovations in housing that lower high-utilization costs



Preparation for future public health emergencies



Paid family caregiving to offset care worker shortage and decrease institutional costs



Telehealth and technology to improve health outcomes

***How does NIDILRR help you?***