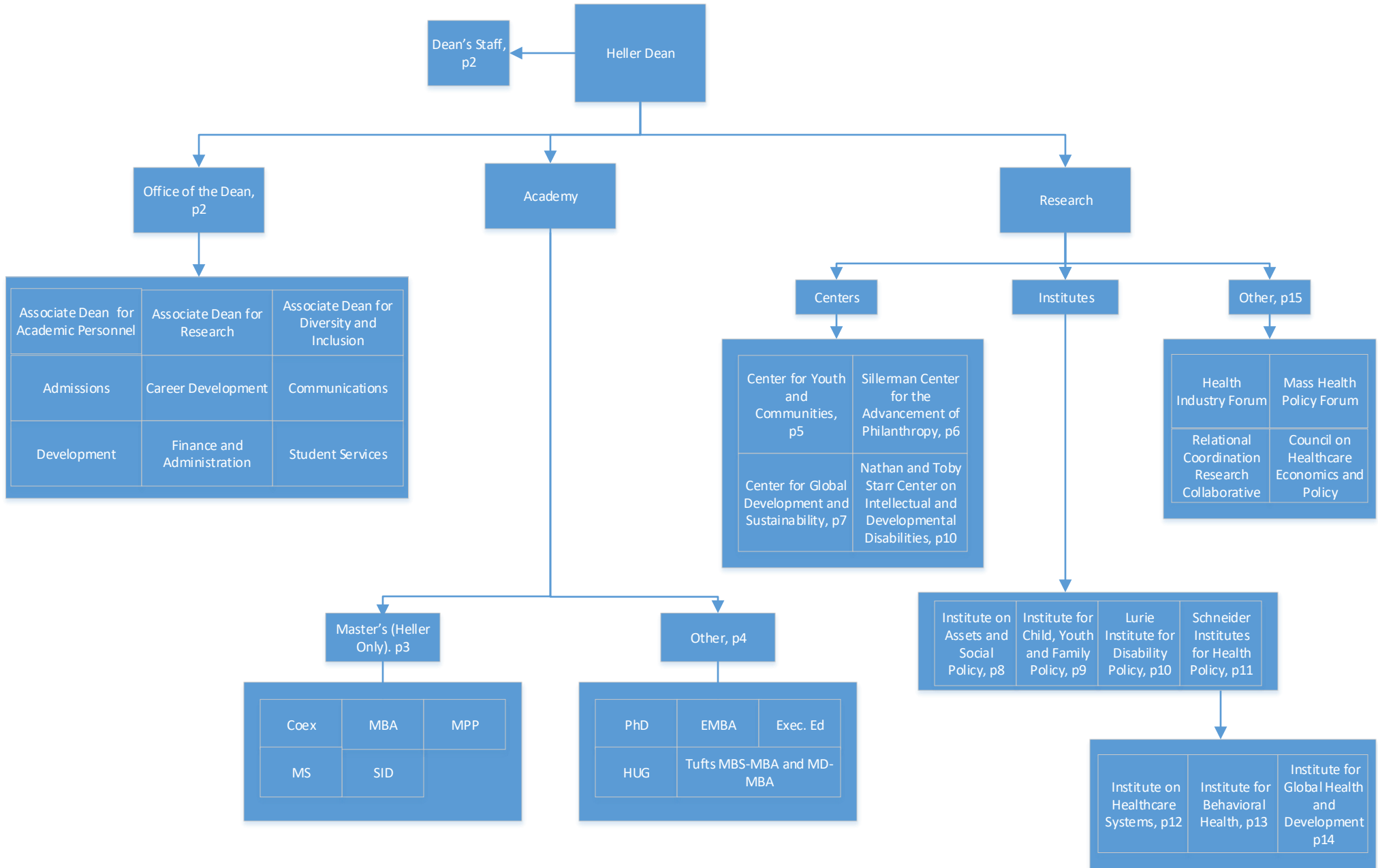


The Heller School

FOR SOCIAL POLICY AND MANAGEMENT

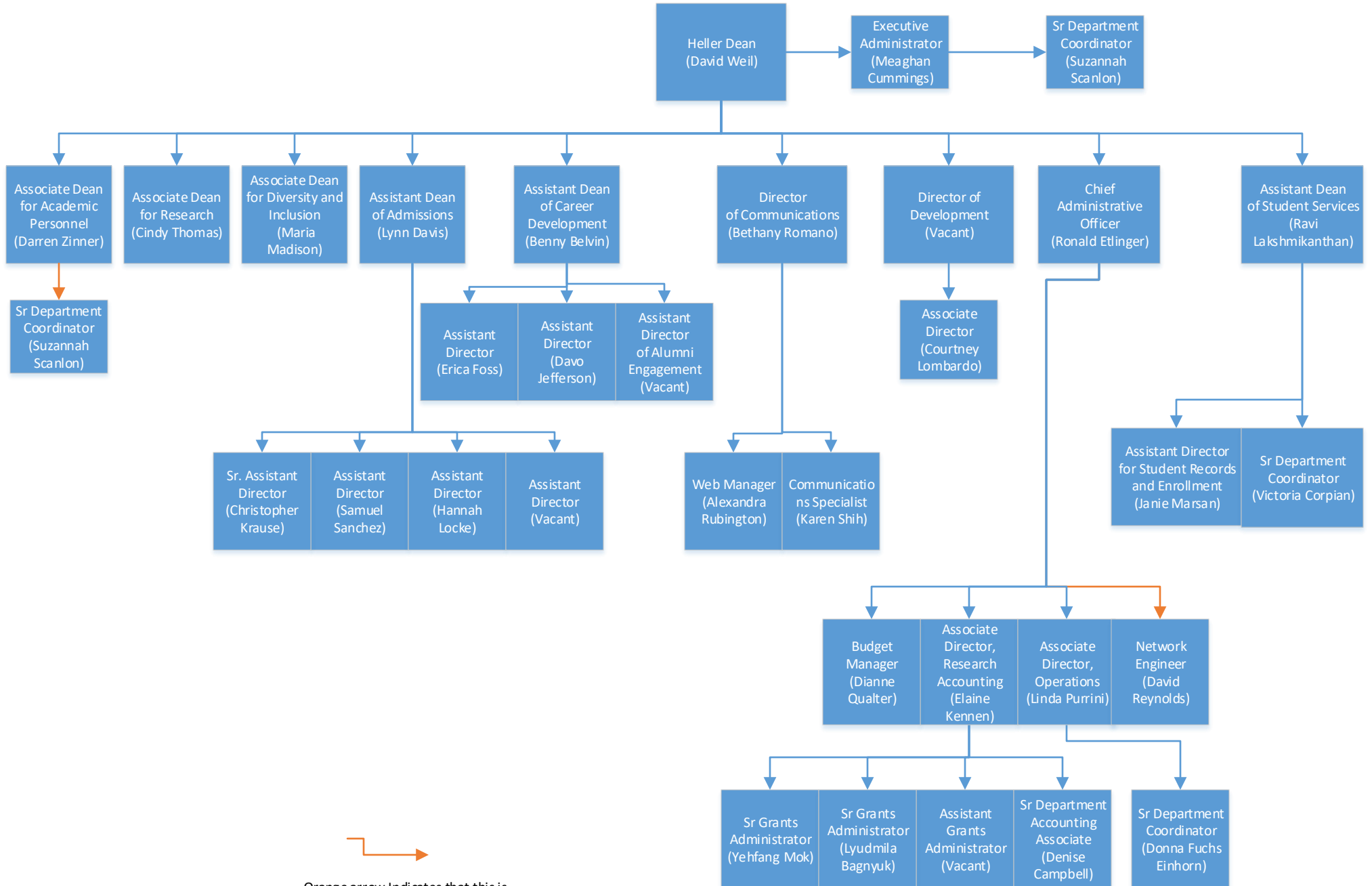
Overview



The Heller School

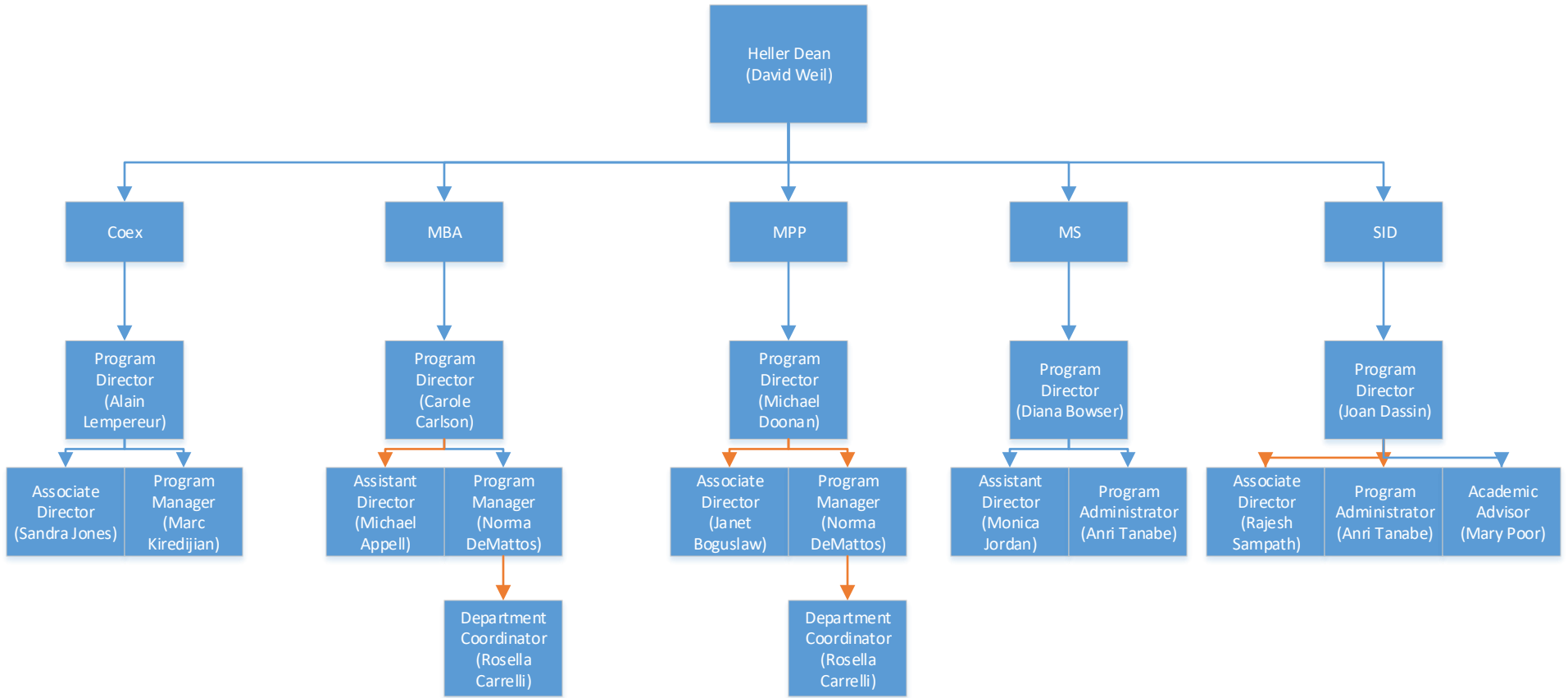
FOR SOCIAL POLICY AND MANAGEMENT

Office of the Dean



 Orange arrow Indicates that this is not an official reporting line.

Academy- Masters (Heller Only)



COEX Core Faculty*

- Mari Fitzduff
- Theodore Johnson

MBA Core Faculty*

- Brenda Anderson
- Lawrence Bailis
- Jon Chilingirian
- Susan Curnan
- Joel Cutcher-Gershenfeld
- Stephen Fournier
- Jody Hoffer Gittel
- Jeffrey Prottas

MPP Core Faculty*

- Christine Bishop
- Mary Brolin
- Susan Curnan
- Stephen Fournier
- Jeffrey Prottas
- Marji Warfield

MS Core Faculty*

- Stephen Fournier
- A.K. Nandakumar
- Donald Shepard
- Wu Zeng

SID Core Faculty*

- Joseph Assan
- Joshua Ellsworth
- Cristina Espinosa
- Ricardo Godoy
- Marion Howard
- Eric Olson
- Larry Simon



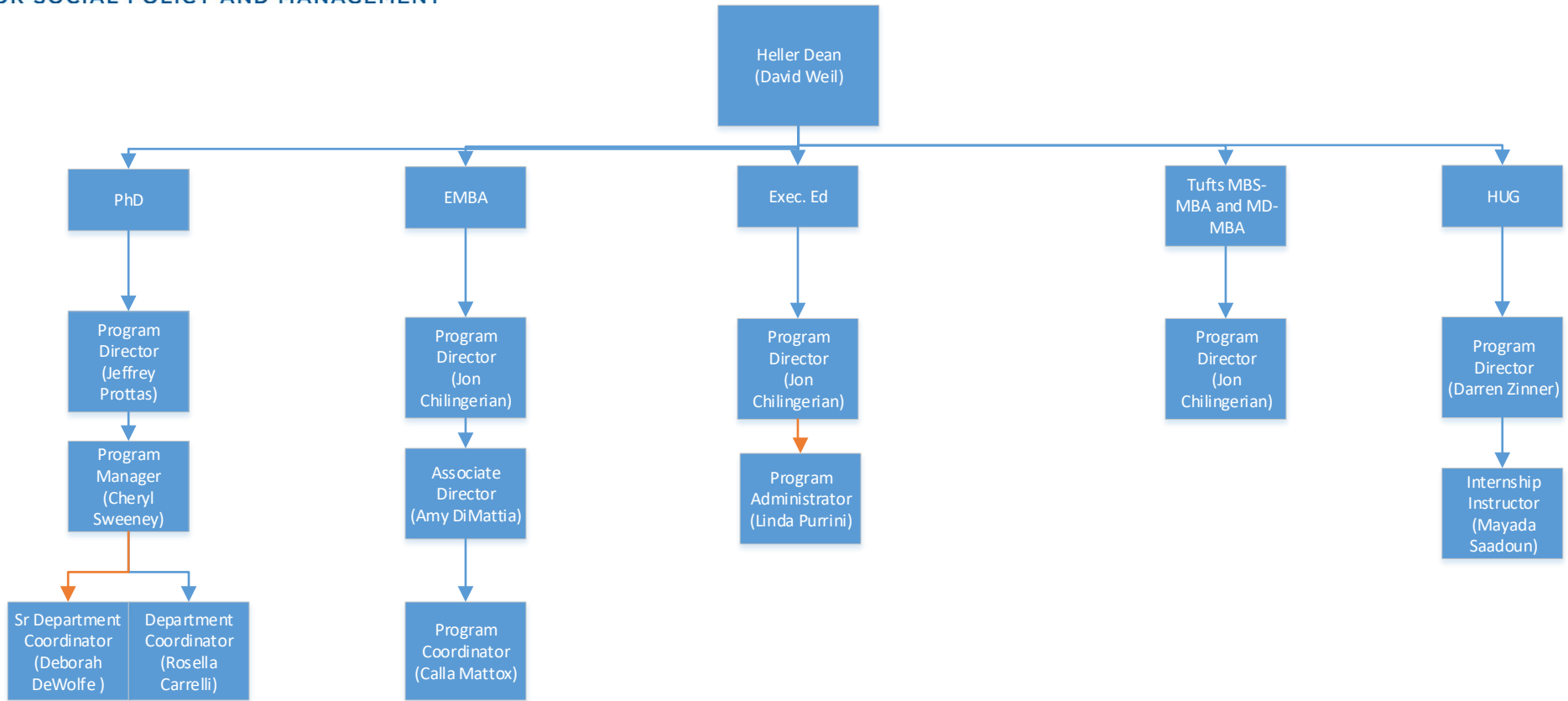
Orange arrow Indicates that this is not an official reporting line.

*Core Faculty do not include external faculty, such as adjuncts, those who teach but are on a research track, such as scientists with lecturer titles, staff who teach, or those who direct or associate direct the program.

The Heller School

FOR SOCIAL POLICY AND MANAGEMENT

Academy- Other



PhD Core Faculty*

- Dolores Acevedo-Garcia
- Stuart Altman
- Christine Bishop
- Jon Chilingierian
- Stephen Fournier
- Deborah Garnick
- Jody Hoffer Gittell
- Dominic Hodgkin
- Constance Horgan
- Nina Kammerer
- Monika Mitra
- Grant Ritter
- Len Saxe
- Laurence Simon
- Thomas Shapiro
- Deborah Stone

HUG Core Faculty*

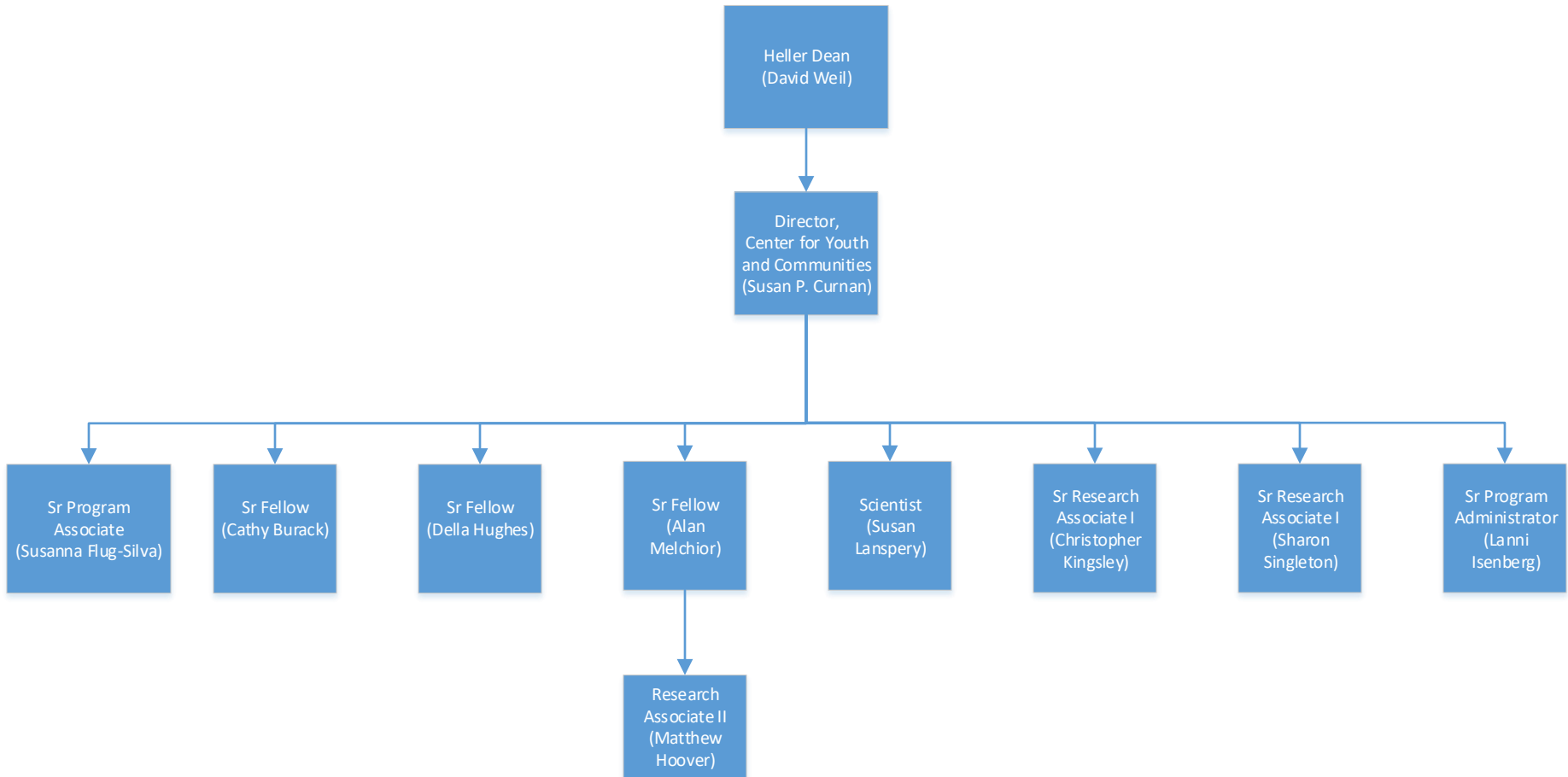
- Dolores Acevedo-Garcia
- Stuart Altman
- Deborah Garnick
- Dominic Hodgkin
- Eric Olson
- Sharon Reif
- Rajesh Sampath
- Thomas Shapiro
- Cindy Thomas



Orange arrow Indicates that this is not an official reporting line.

*Core Faculty do not include external faculty, such as adjuncts, those who teach but are on a research track, such as scientists with lecturer titles, staff who teach, or those who direct or associate direct the program.

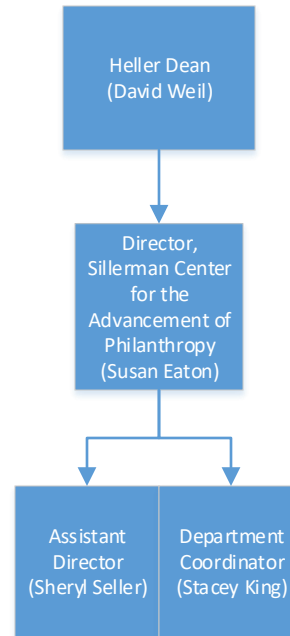
Center for Youth and Communities

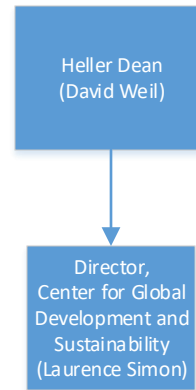


Heller Faculty Associated with this Center

- Lawrence Bailis

Sillerman Center for the Advancement of Philanthropy

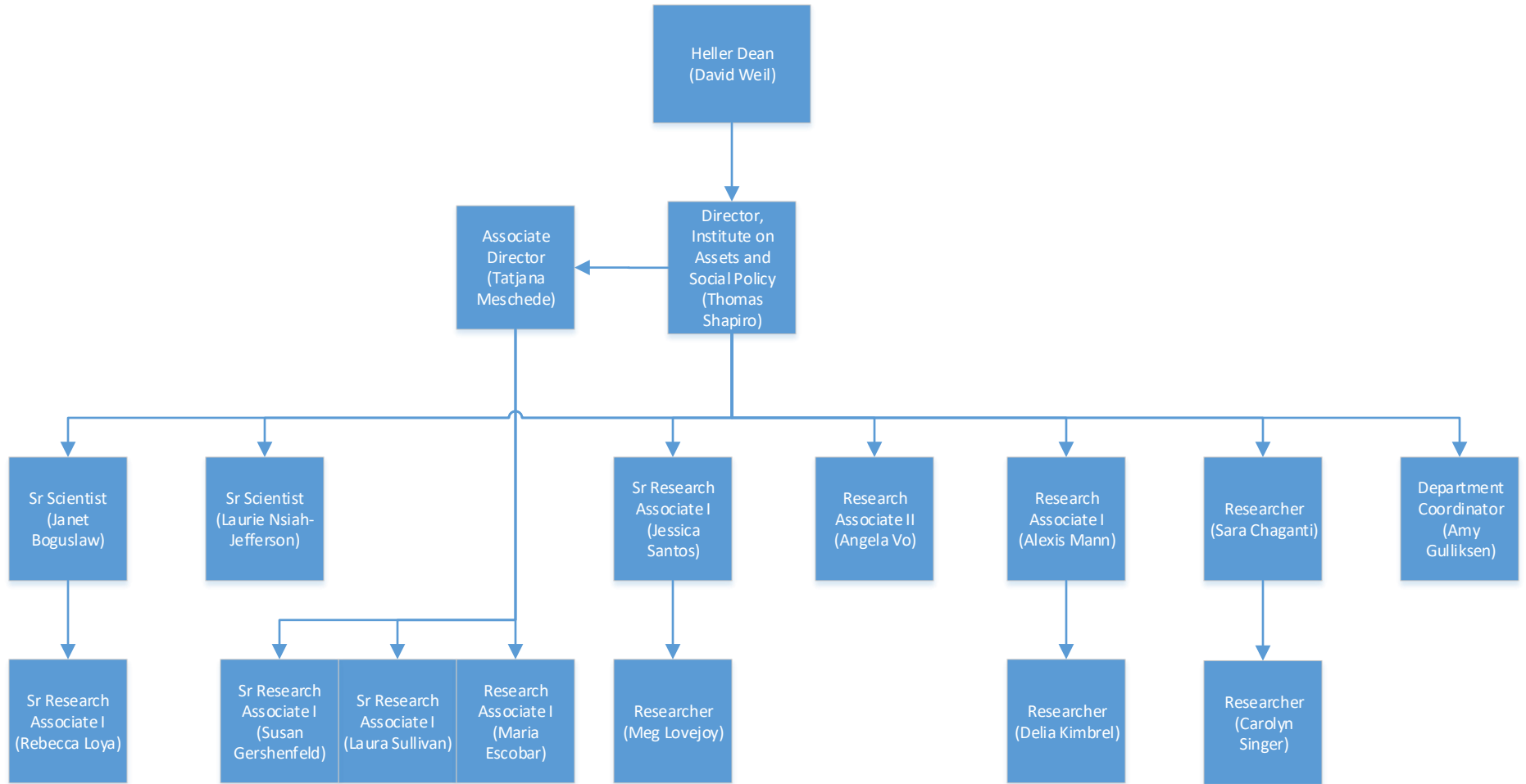




Heller Faculty Associated with this Center

- Joseph Assan
- Joan Dassin
- Joshua Ellsworth
- Cristina Espinosa
- Mari Fitzduff
- Stephen Fournier
- Ricardo Godoy
- Marion Howard
- Alain Lempereur
- Eric Olson
- Rajesh Sampath
- Donald Shepard

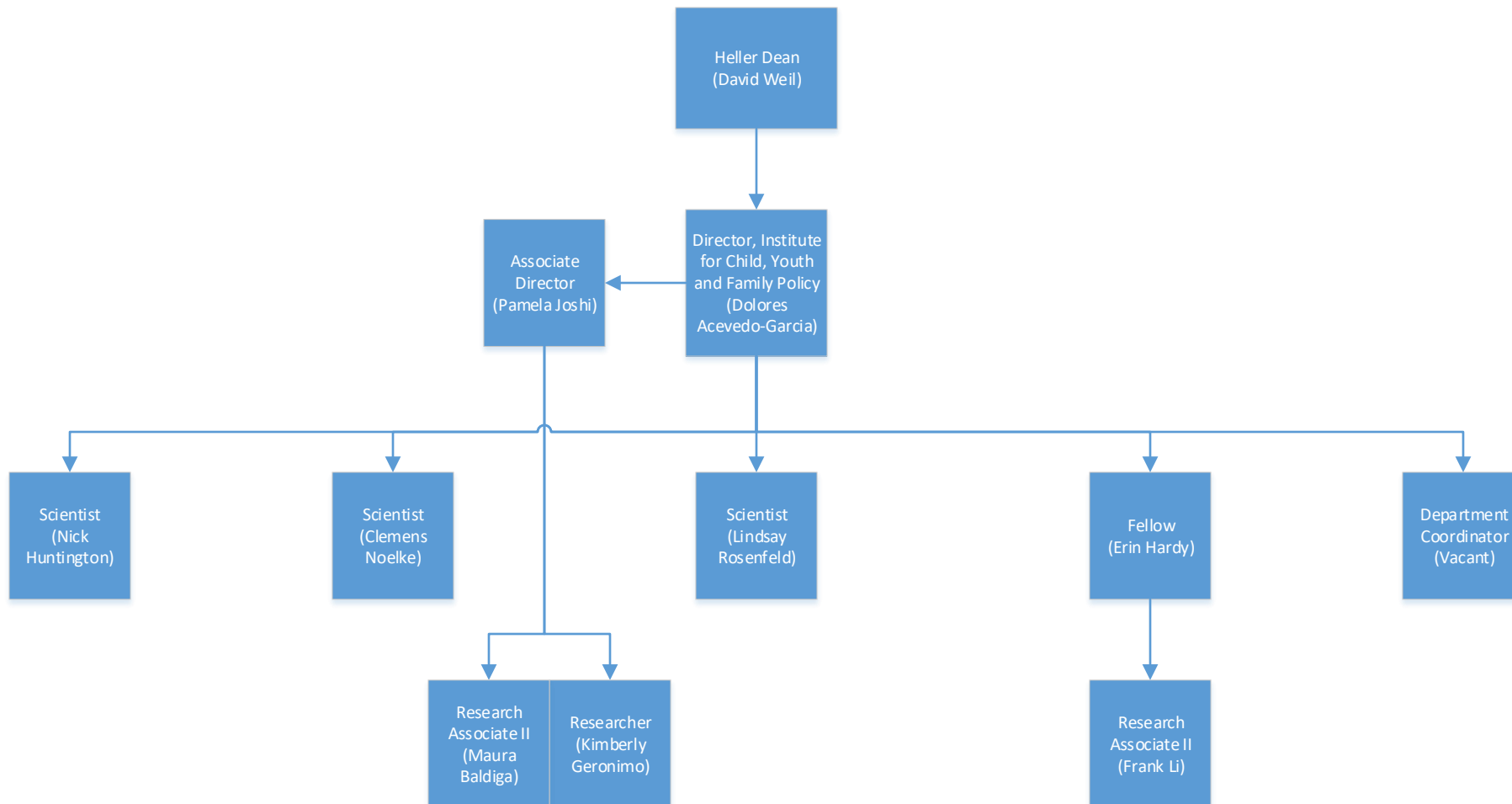
Institute on Assets and Social Policy



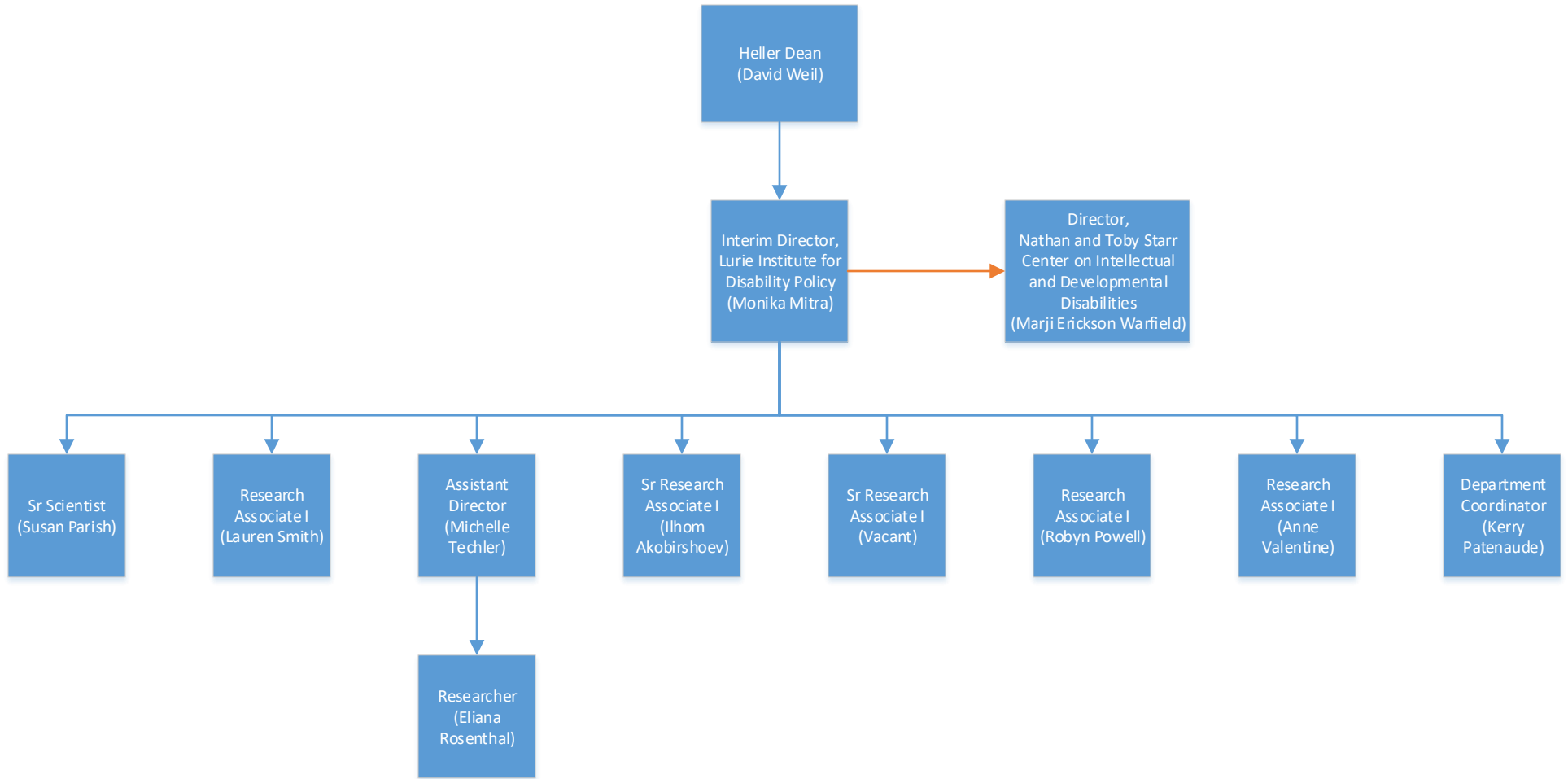
Heller Faculty Associated with this Institute

- Anita Hill
- Jeffrey Prottas

Institute for Child, Youth and Family Policy

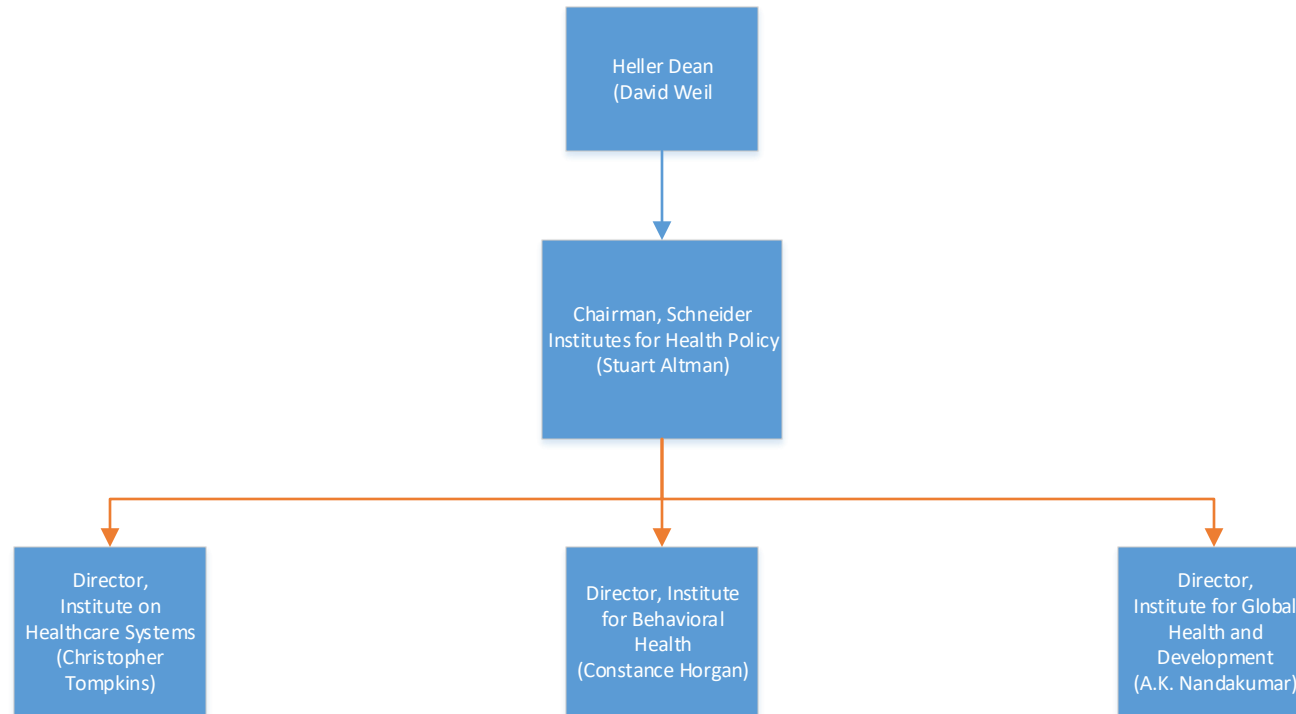


Lurie Institute for Disability Policy



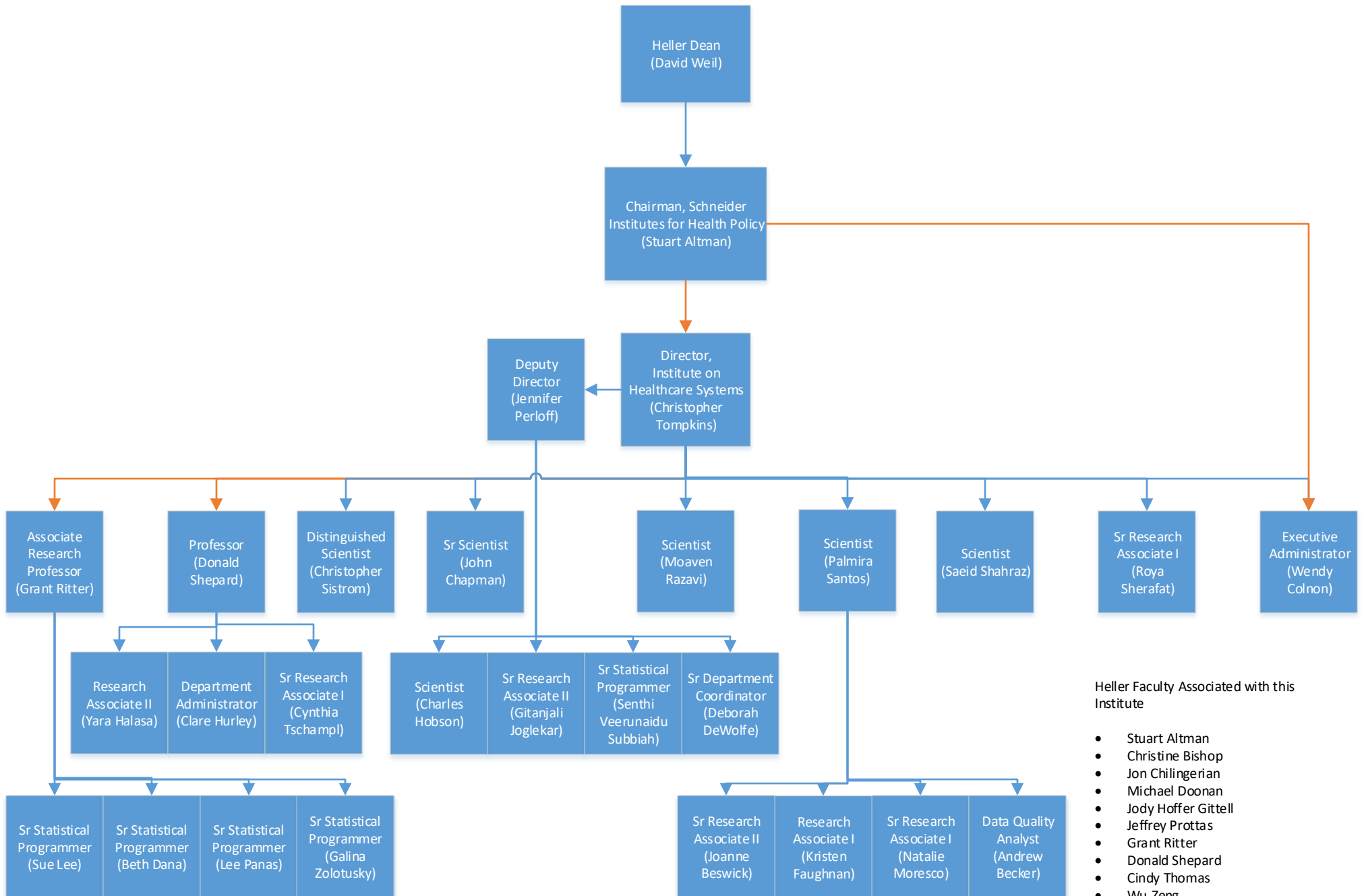
Orange arrow indicates that this is not an official reporting line.

Schneider Institutes for Health Policy



See next few pages for further breakouts of the institutes.

Schneider Institute on Healthcare Systems



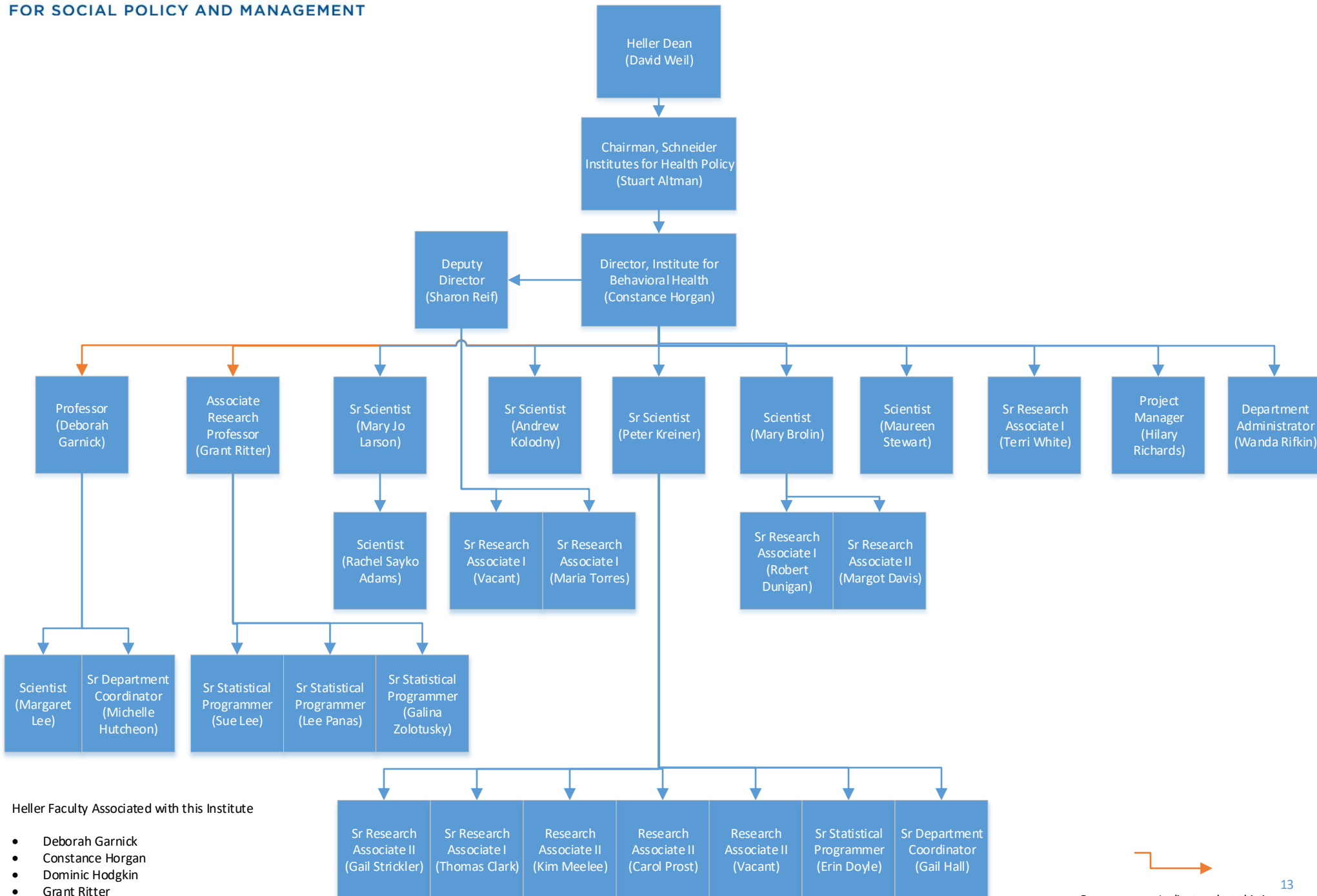
Heller Faculty Associated with this Institute

- Stuart Altman
- Christine Bishop
- Jon Chilingirian
- Michael Doonan
- Jody Hoffer Gittel
- Jeffrey Protas
- Grant Ritter
- Donald Shepard
- Cindy Thomas
- Wu Zeng
- Darren Zinner

The Heller School

FOR SOCIAL POLICY AND MANAGEMENT

Schneider Institute for Behavioral Health



Heller Faculty Associated with this Institute

- Deborah Garnick
- Constance Horgan
- Dominic Hodgkin
- Grant Ritter



Orange arrow Indicates that this is not an official reporting line.

The Heller School

FOR SOCIAL POLICY AND MANAGEMENT

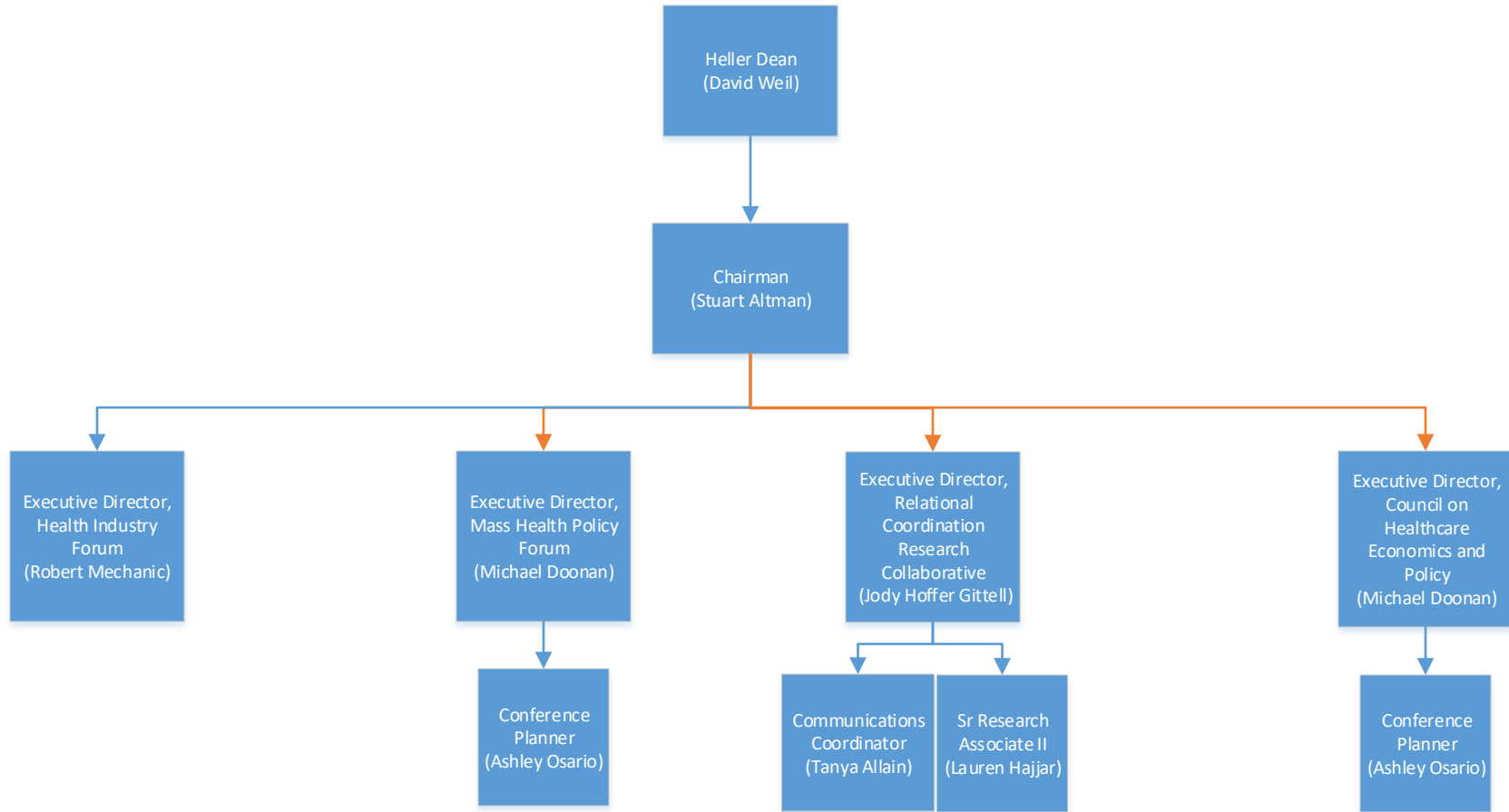
Schneider Institute for Global Health and Development



Heller Faculty Associated with this Institute

- Diana Bowser

Other Research



Associated Heller Faculty

- Darren Zinner

 Orange arrow Indicates that this is not an official reporting line.